

2024 Annual Report for Lesser Slave Regional Fire Service

Our Mission

Through partnerships and collaboration, the Lesser Slave Regional Fire Service strives to provide safer communities through sustainable fire and life safety initiatives, education and emergency response.

Our Vision

Providing a safe and sustainable future within our communities through emergency preparedness, training and education.

Our Values

We value safety, integrity, respect, excellence, community, and success through collaboration and innovation.



SUMMARY

In 2024 the Lesser Slave Regional Fire Services again responded to a record number of emergency incidents, totaling 714, this year. We did not experience a significant increase in any one incident type; however, we did see an increase across the board. Across the region firefighters dealt with multiple big events that required responses from multiple stations. In 2024 the LSRFS also sent crews to assist with provincial deployments 8 times in 6 different communities including the Jasper wildfire. Responding to various events also means that we require highly trained, professional responders. Training continues to be a large focus as we continue to provide top standard firefighter training for our firefighters and are in the second year of the LSRFS & NLC Fire/PCP program in partnership with our local college.

A new Type 1 SPU trailer was completed in 2024 and is ready for response and deployment in the coming 2025 wildfire season. A new Engine for Widewater was ordered and is in the process of being built with an expected delivery date of Mid - 2025.

This report will briefly illustrate some of the statistics for the 2024 response year and highlight some of the challenges faced as well look ahead to the challenges that lie ahead in 2025. The new radio communications system (AFRRCS) was fully finalized and is now in place providing better communications for firefighters to keep themselves safe and provide a more reliable level of service to the public.

Emergency Calls

Breakdown by Station:

Station 1 (Slave Lake) – 566

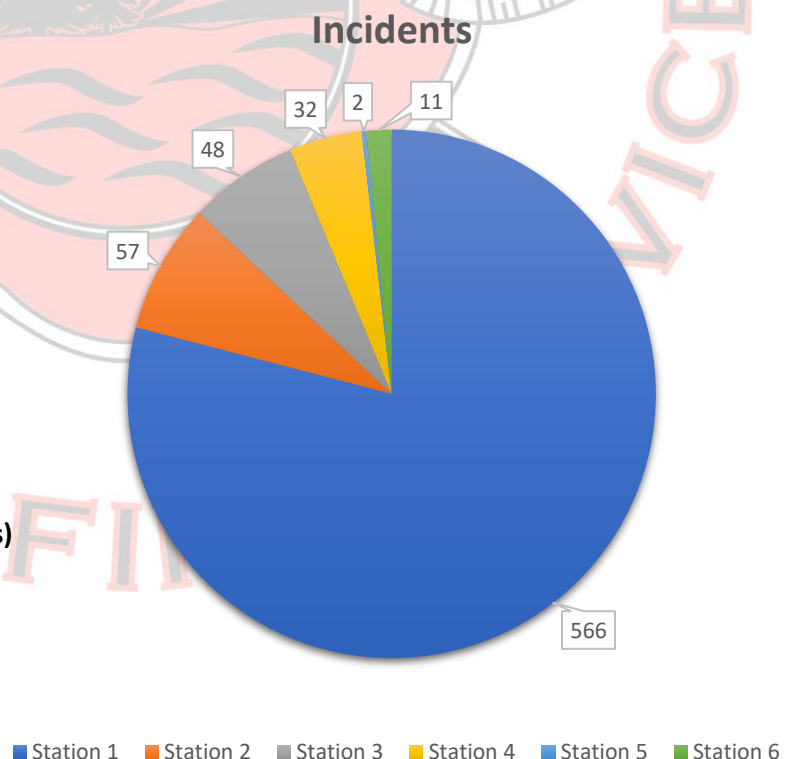
Station 2 (Widewater) – 57

Station 3 (Smith) – 48

Station 4 (Flatbush) – 32

Station 5 (Mitsue) – 2 (support other halls)

Station 6 (SAR) – 11



Incident Statistics:

Fire – 307

Structure, car, outdoor, alarms, power, trash

Rescue – 213

Motor vehicle collision, rope, confined space, water, ice, machinery, SAR assist, backcountry

Medical – 186

All EMS assistance incidents

Hazmat – 8

All Hazardous Materials related incidents

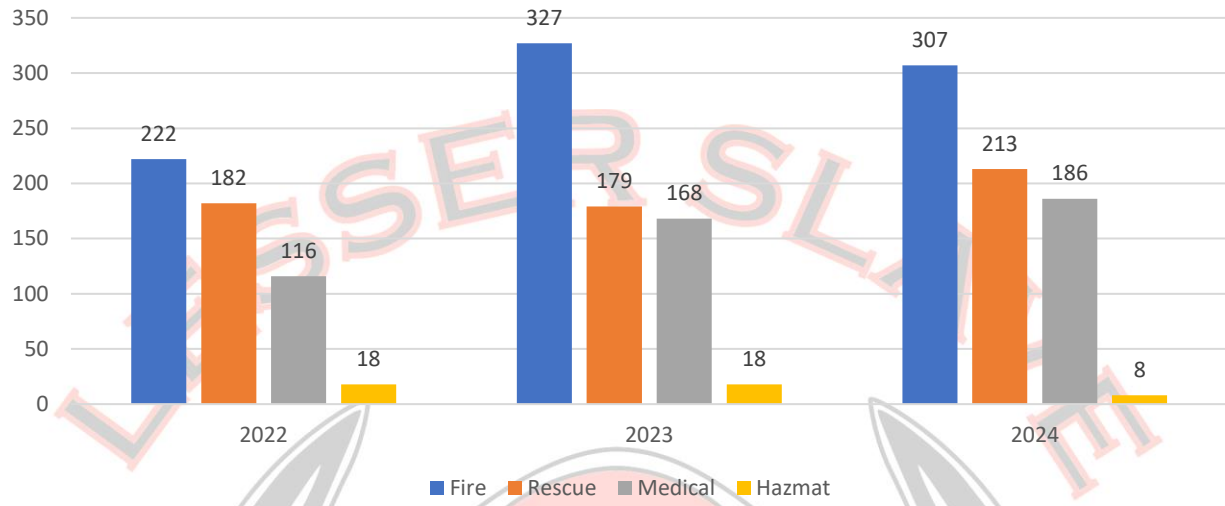
Total Incident 2024 = 714

Total apparatus responses = 1,212

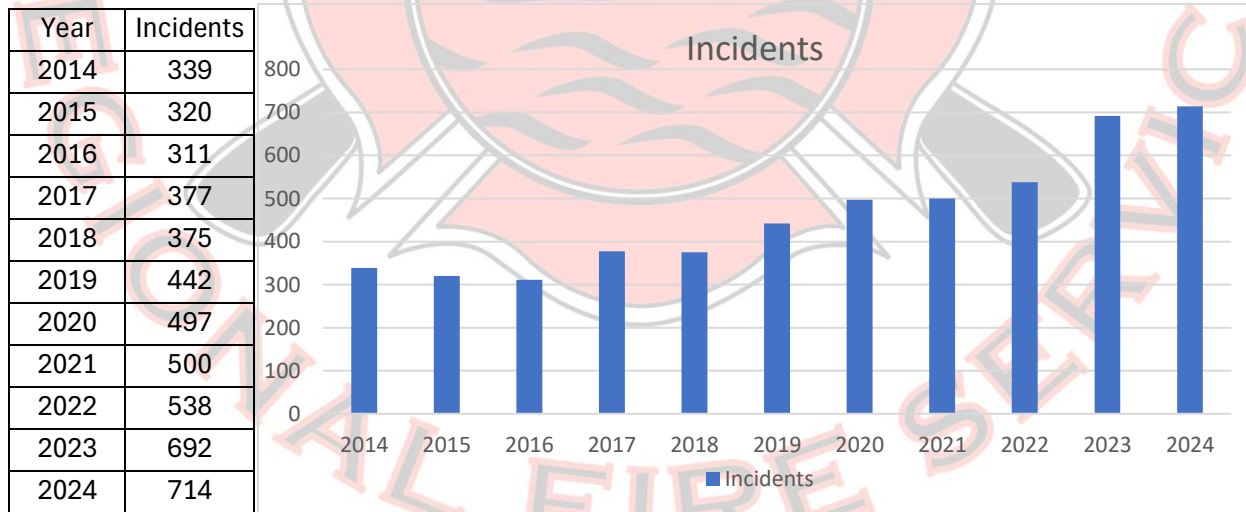
Total personnel incident hours – 4,101



LSRFS 3 Year Incident Breakdown



10 Year Trend



REGIONAL LSRFS TRAINING

- LSRFS Firefighters put in a total of **3281 training hours** in 2024
- SAR members put in a total of **655 training hours** in 2024
- Special Operations personnel put in a total of **164 training hours** in 2024



LSRFS Training Topics

All LSRFS levels of service are trained on annually to ensure firefighters are ready to respond to all emergencies that come in, topics include:

- Structural, vehicle, wildland and oilfield freighting tactics.
- Motor Vehicle Collision extrication, stabilization and scene hazard mitigation.
- Medical skills to assist EMS with response to specified medical events.
- Hazardous Materials response operations.
- Apparatus operator training to ensure firefighters can drive and operate equipment safely.
- Firefighter survival and firefighter rescue (RIT) training.
- Special Operations support to allow firefighters to support the Special Operations incidents.
- Ice Rescue training.
- Aircraft and railway emergency response and hazard identification.

Training for LSRFS members takes part on Monday, Tuesday, Wednesday nights and select scheduled weekends throughout the year.

Special Operations

Special Operations is made up into 3 teams and has members from across the region who fill these specialty areas. Currently the LSRFS has a Water Rescue Special Operations Team, a Technical Rescue Special Operations Team and Hazmat Technician trained firefighters to deal with Hazardous Materials and Dangerous Goods incidents.

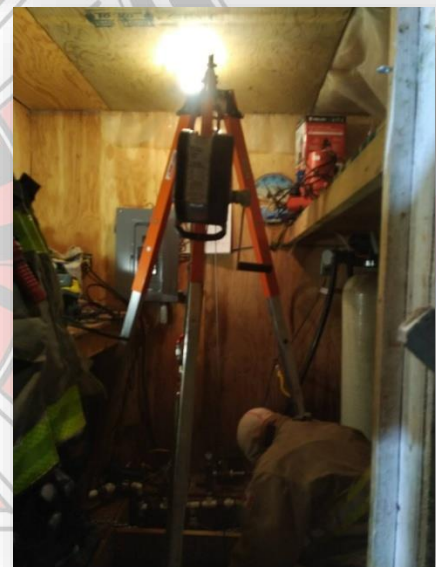
Water Rescue

- Currently Water Rescue has 20 members.
- These 20 members put in a total **60 hours** of specialty training throughout 2024.
- This team had a total of **68 hours** of special operations incident hours in 2024.



Technical Rescue

- Currently Technical Rescue has 12 members.
- These 12 members put in a total of **20 hours** of specialty training throughout 2024.
- This team had a total of **24 hours** of special operations incident hours in 2024.



Hazmat Technicians

- Currently the LSRFS has 5 Hazardous Materials Technician that take part in annual skills training to ensure they stay current on best practices.



FIRE & LIFE SAFETY / PREVENTION

- Fire & Life Safety Inspections: 22
- Fire Investigations: 14
- Fire Prevention week school tours – 11 schools/2953 School Age Children
- Fire Department open houses (fire prevention week and Emergency Preparedness week) – 4
1152 Guests Visited Open houses
- Community Events (*i.e., Candy cane check stop, Christmas toy drive*) – 2
- FireSmart Community Events: 1
- Marten Beach Community Day
- FireSmart Home Assessments: 1 completed
- Hazard Reduction Burning: 58 HA
- Boat Patrols: 16
- Pre-Incident Planning: 65 Complete, 18 in progress
- Community Wildfire Pre-Planning: 7 Complete, 3 in progress



EMERGENCY SERVICES TRAINING CENTRE

- 2024 Recruit Class's – 8 new LSRFS members (7 *Slave Lake, 1 Widewater*)
- In-House Training Program (5 *LSRFS Stations*)
- WUI Basic, WUI Task Force Leader & WUI Division Supervisor course development in coordination with the Alberta Government (AEMA).
- ATCO Electric driver training
Employee driver training course for 3 days
- Northern Lakes College
NLC confined space rescue course (4 *days throughout year*)
- WCSS annual spill exercise
2-day spill clean up exercise.
Area D spill co-op annual training scenario's 2-day hazardous spill exercise
- LSRFS/Northern Lakes College
Fire/PCP Program 10 months



LOCAL FIRE SERVICE GROUPS

- Special Teams – *Lead Organization*
- Search & Rescue – *Lead Organization*
- Mitsue Mill Managers – *Committee Chair*
- Protective Services – *Committee Chair*
- Regional Fire Chiefs – *Committee Chair*
- Area D Spill Co-Op - *Member*
- Regional Advisory Group – *Internal working Committee*

FIREFIGHTER SOCIETY

- Smile Cookie
- Pancake Breakfast
- Spring BBQ
- All In Weekend Support



LSRFS FLEET

- **1 Squad**
 - Carries tools to start any job (*i.e.: small rescue tools, firefighting gear, water/rope gear, Hazmat*).
- **1 Rescue Truck**
 - Has all the rescue gear needed to perform any rescue and all Hazmat gear.
- **2 Ladder Trucks**
 - 1 in Slave Lake first out to all confirmed structure fires, 1 in Mitsue industrial park.
- **6 Engines**
 - 2 Engines in Slave Lake, 1 for structure fire response, 1 for wildland response or where 4x4's needed, 1 at every other station, rural engines carry rescue tools as well as fire equipment.
- **1 Brush Truck**
 - Set up for wildland fires and structure protection locally and/or provincially.
- **4 Tanker Trucks**
 - 1 in Slave Lake, 1 in Widewater, 1 in Smith, 1 in Flatbush used for areas with no hydrants.
- **6 Command/Light Vehicles**
 - Used for Nighttime duty officers, Chief vehicles, pulling trailers and 1 can help to plow snow.
- **1 unit station in Flatbush**
- **6 Trailers**
- **1 Command/Rehab Unit**
- **1 SAR trailer**
- **2 structure protection units (+ 1 new one in 2024)**
- **2 electronic signs**
- **4 ATV's 2 6x6's and 2 Quads** used by all stations, Search & Rescue and Special Teams for access.
- **2 Boats**
 - 1 Large 24-foot aluminium hull for lake use, 1 Small 11-foot rib boat for river, creek, and flooding use.
- **1 Tractor**
 - Used for mowing program to keep down hazardous grass in spring, summer and fall.
- **1 Skid Steer**
 - Training centre support, snow removal station 1,2,5 and removal of problem trees.

LSRFS RESPONSE AREA

- 10,000 Square KM
- 10,000 Residents
- 400 KM of primary & secondary highway
 - 110km North on Hwy 88, 60km East on Hwy 754, 118km South on Hwy 2/44, 60km East on Hwy 2 towards Athabasca, 40km West on Highway 2.
- Bodies of water
 - Athabasca River, Lesser Slave River, Pembina River, East basin of Slave Lake, all streams, creeks, dugouts, and ponds in MD124.
- Provincial Parks
 - Lesser Slave, Fawcett, Lawrence Lake, Chain Lakes.
- Mitsue Industrial Park
 - Tolko, Slave Lake Pulp, Alberta Plywood and Vanderwells, Tiger Calcium
- All oilfield facilities
 - Marten Hills road, Hwy 754, Hwy 88, South Mitsue, Mitsue.



COMMUNITIES

- Assineau Initial Response: *Station 2*
- Canyon Creek Initial Response: *Station 2*
- Widewater Initial Response: *Station 2*
- Wagner Initial Response: *Station 2*
- Bayer Road Initial Response: *Station 1*
- Slave Lake Initial Response: *Station 1*
- Sawridge First Nations Initial Response: *Station 1*
- Marten Beach Initial Response: *Station 1*
- Poplar lane Initial Response: *Station 1*
- Mitsue Industrial Park Initial Response: *Station 5*
- Old Smith Highway Initial Response: *Station 1, 5 or 3 (depending on location)*
- Hondo Initial Response: *Station 3*
- Smith Initial Response: *Station 3*
- East Fawcett Initial Response: *Station 3*
- West Fawcett Initial Response: *Station 3*
- Lawrence Lake Initial Response: *Station 3*
- Chisholm Initial Response: *Station 4*
- Tieland Road Initial Response: *Station 4*
- Flatbush Initial Response: *Station 4*



5 STATIONS

- Station 1 Slave Lake, Station 2 Widewater, Station 3 Smith, Station 4 Flatbush, Station 5 Mitsue.
- **3 Special Teams (*Water, Technical Rescue, Hazmat*)**
 - Ran out of Station 1 and practice once a month.
- **1 Search & Rescue Group**
 - Ran out of Station 5 and practice twice a month.



- **106 Paid-On-Call Members**
 - Split up between Station's 1 – 5, SAR and Special Teams.
- **8 Fulltime Permanent Staff**
 - Fire Chief, Deputy Chief, Maintenance Officer, Admin Assistant, Captain, 3 Fire Fighters.
- **6 Students Lakeland/NLC**



- Station 1:
 - 44 Firefighters
 - 2 Lieutenants
 - 4 Captains
 - 1 Deputy Chief
 - 1 Fire Chief
 - 20 SAR Members



- Station 2:
 - 5 Firefighters
 - 1 Captain
 - 1 Lieutenant



- Station 3:
 - 9 Firefighters
 - 1 Captain
 - 1 Lieutenant



- Station 4:
 - 10 Firefighters
 - 1 Captain
 - 2 Lieutenants



- Station 5:
Note * currently stationed out of Station 1, Station 5 ran as a satellite station.



PROFESSIONAL ASSOCIATION ACTIVITY / INVOLVEMENT

- Canadian Volunteer Fire Service Association (*CVFSA*)
- Alberta Fire Training Officers' Association (*AFTOA*)
- Canadian Association of Fire Chiefs (*CAFC*)
- National Fire Protection Agency (*NFPA*)
- Alberta Fire Chiefs Association (*AFCA*)
- Search and Rescue Alberta (*SARA*)
- Peace Regional Fire Chiefs' (*PRFC*)

