

WILDLIFE LEGACY
CENTRE
EVACUATION PLAN
MAIN FLOOR
400 - 6th AVENUE NE



EVACUATION PLAN:

1. Ensure any members of the public in the immediate area are instructed to evacuate.
2. Leave the building immediately by following the closest and safest evacuation route.
3. Close but do not lock doors.
4. Proceed on foot to the muster point.
5. **Do not move your vehicles** as this may delay getting people away from danger and hinder emergency vehicles.
6. All personnel are to remain at the muster point until advised it is safe to return to the building.



PRIMARY ROUTE



SECONDARY ROUTE



WINDOW



DOOR



OVERHEAD DOOR



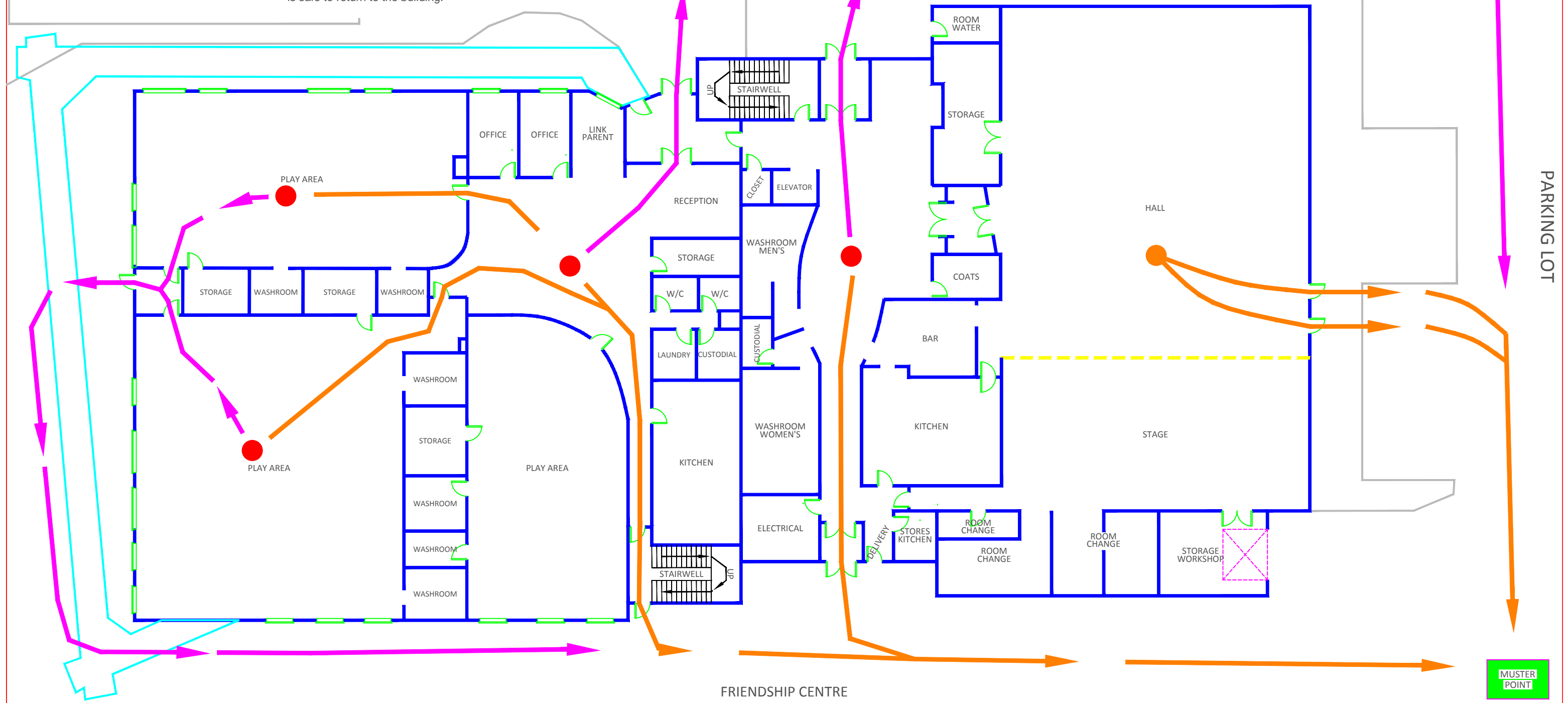
C J SCHURTER SCHOOL

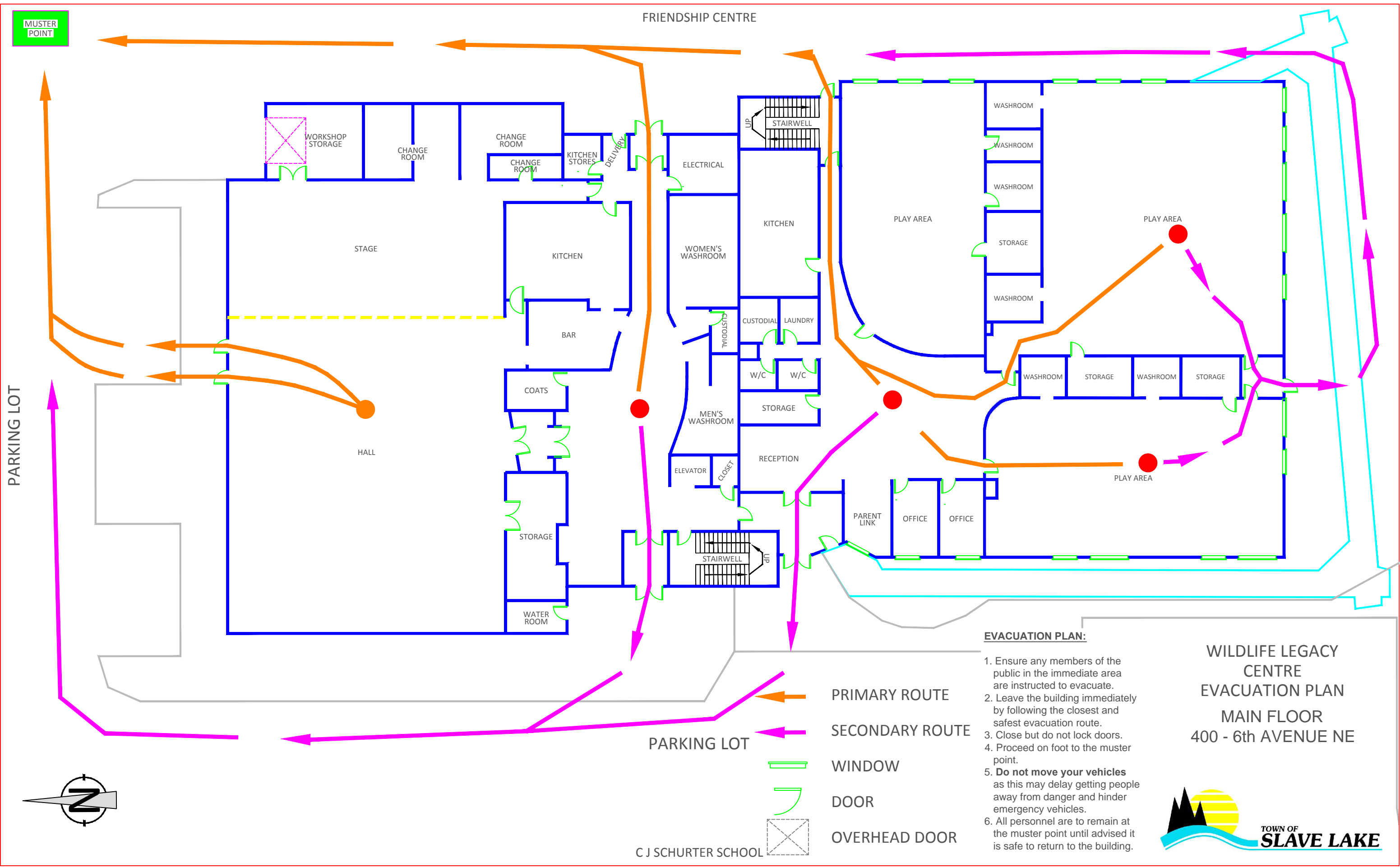
PARKING LOT

PARKING LOT

FRIENDSHIP CENTRE

MUSTER
POINT





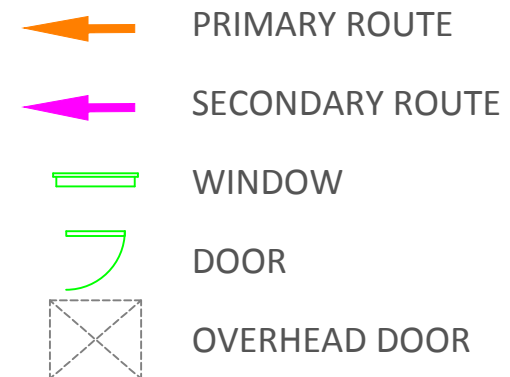
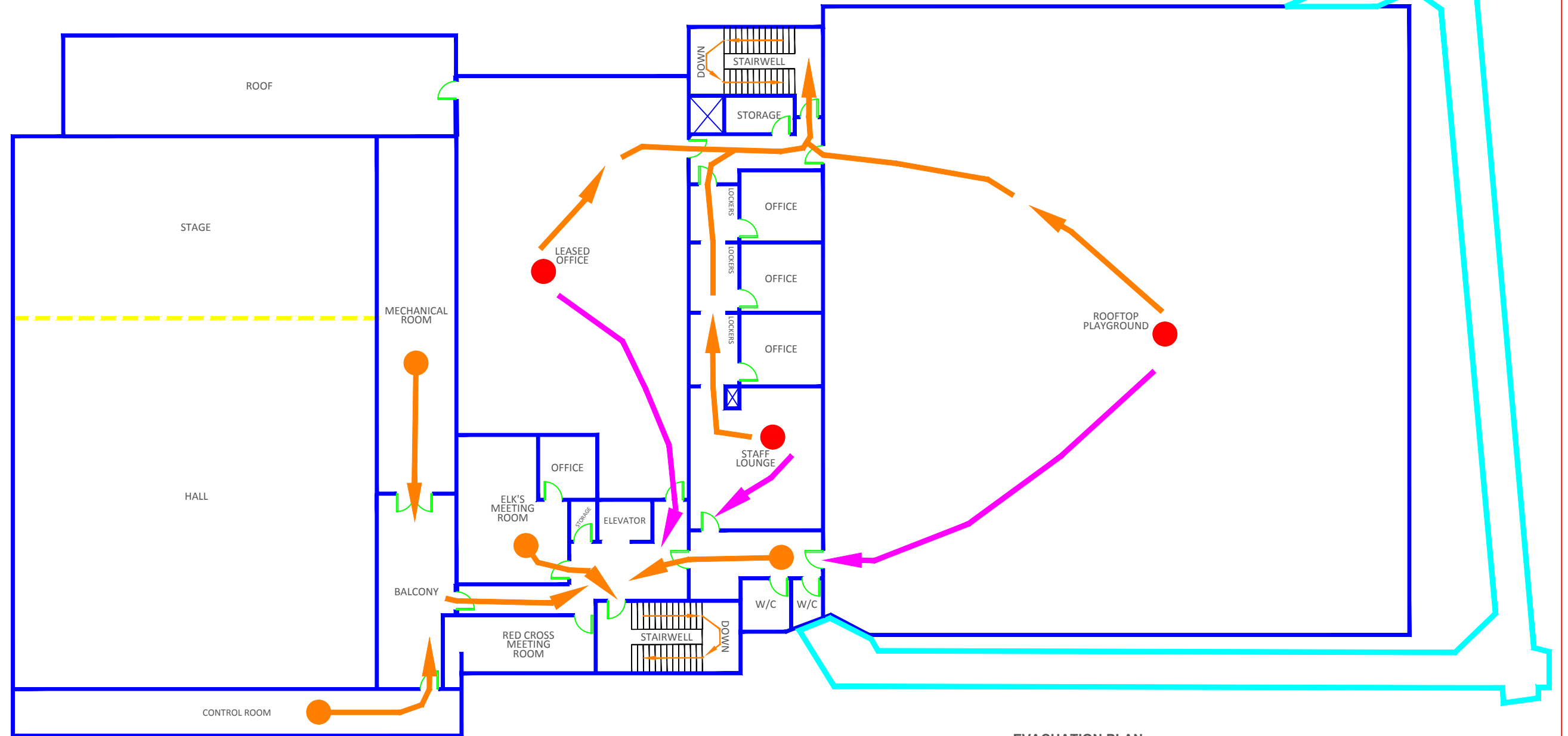
EVACUATION PLAN:

1. Ensure any members of the public in the immediate area are instructed to evacuate.
2. Leave the building immediately by following the closest and safest evacuation route.
3. Close but do not lock doors.
4. Proceed on foot to the muster point.
5. **Do not move your vehicles** as this may delay getting people away from danger and hinder emergency vehicles.
6. All personnel are to remain at the muster point until advised it is safe to return to the building.

WILDLIFE LEGACY
CENTRE
EVACUATION PLAN
MAIN FLOOR
400 - 6th AVENUE NE



MUSTER
POINT



EVACUATION PLAN:

1. Ensure any members of the public in the immediate area are instructed to evacuate.
2. Leave the building immediately by following the closest and safest evacuation route.
3. Close but do not lock doors.
4. Proceed on foot to the muster point.
5. **Do not move your vehicles** as this may delay getting people away from danger and hinder emergency vehicles.
6. All personnel are to remain at the muster point until advised it is safe to return to the building.

WILDLIFE LEGACY
CENTRE
EVACUATION PLAN
SECOND FLOOR
400 - 6th AVENUE NE

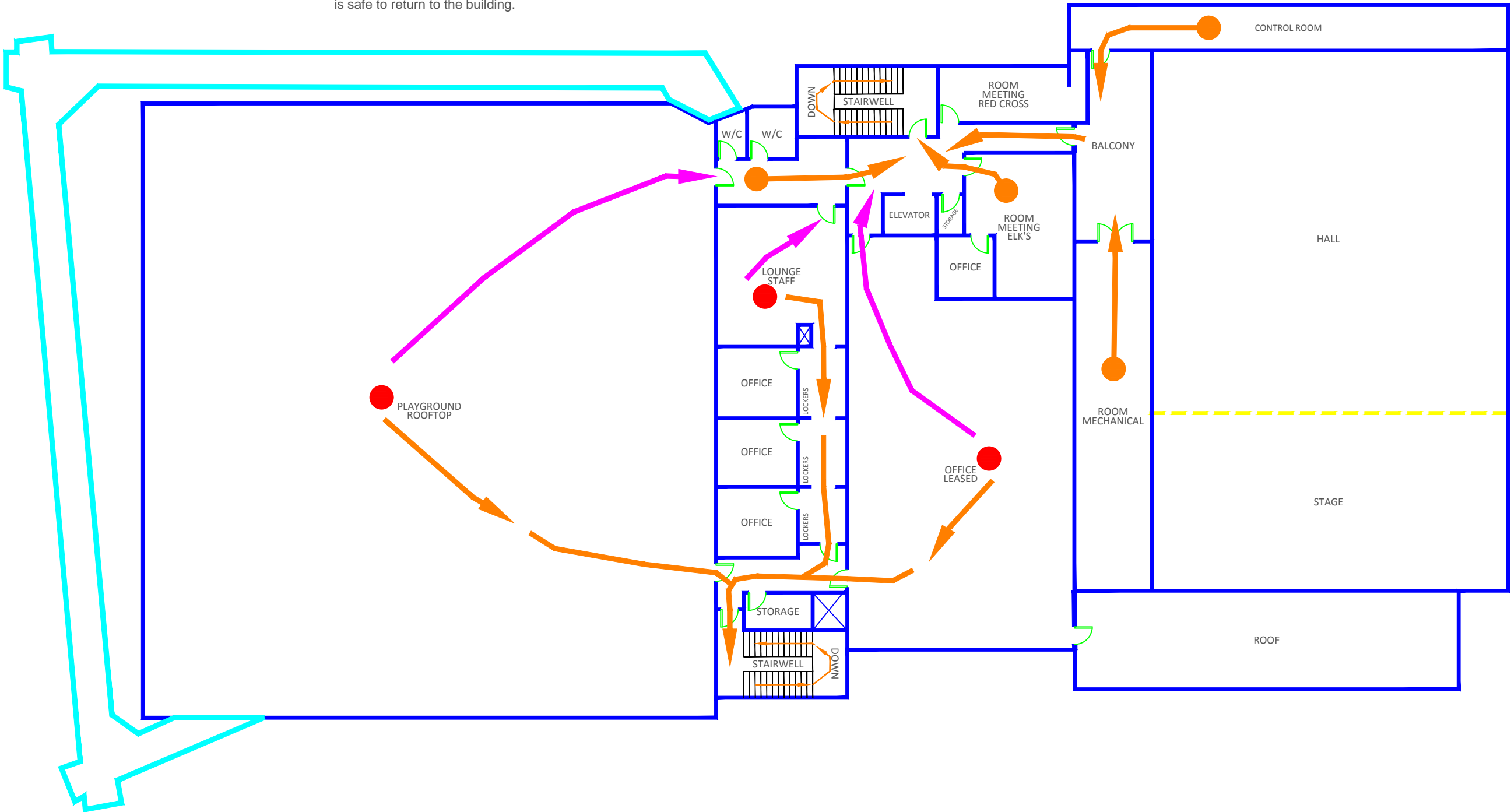
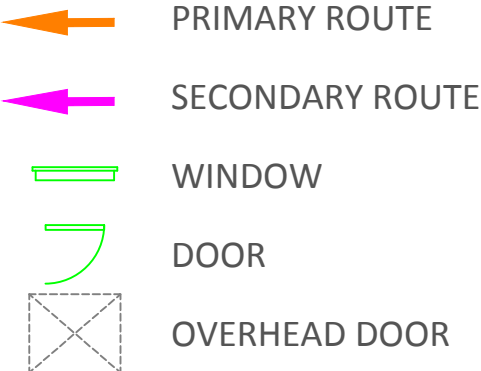


WILDLIFE LEGACY
CENTRE
EVACUATION PLAN
SECOND FLOOR
400 - 6th AVENUE NE



EVACUATION PLAN:

1. Ensure any members of the public in the immediate area are instructed to evacuate.
2. Leave the building immediately by following the closest and safest evacuation route.
3. Close but do not lock doors.
4. Proceed on foot to the muster point.
5. **Do not move your vehicles** as this may delay getting people away from danger and hinder emergency vehicles.
6. All personnel are to remain at the muster point until advised it is safe to return to the building.



MUSTER
POINT