



## WHAT IS IT?

A budget is the Town's operational plan and priorities expressed in dollars. It is a document that shows the revenues and expenses needed in order for the Town to provide daily services and programming and achieve its strategic goals.



## OPERATING VS. CAPITAL

The budget includes two major categories, Operating and Capital

The **Operating Budget** includes revenues, recoveries, and expenditures relating to ongoing annual operations. It is a forecast of revenues collected and expenditures for the day to day operations of all the services and programs the Town of Slave Lake provides.

The **Capital Budget** provides continuing investments for our community to ensure that Slave Lake remains a place to build opportunities and provide for an exceptional quality of life for everyone who lives and visits the community.



The Alberta Municipal Government Act, through which the Town is governed, requires Council to adopt a balanced operating budget.



Utilities, such as water, sewer, and garbage are supported entirely through their own rates and fees.



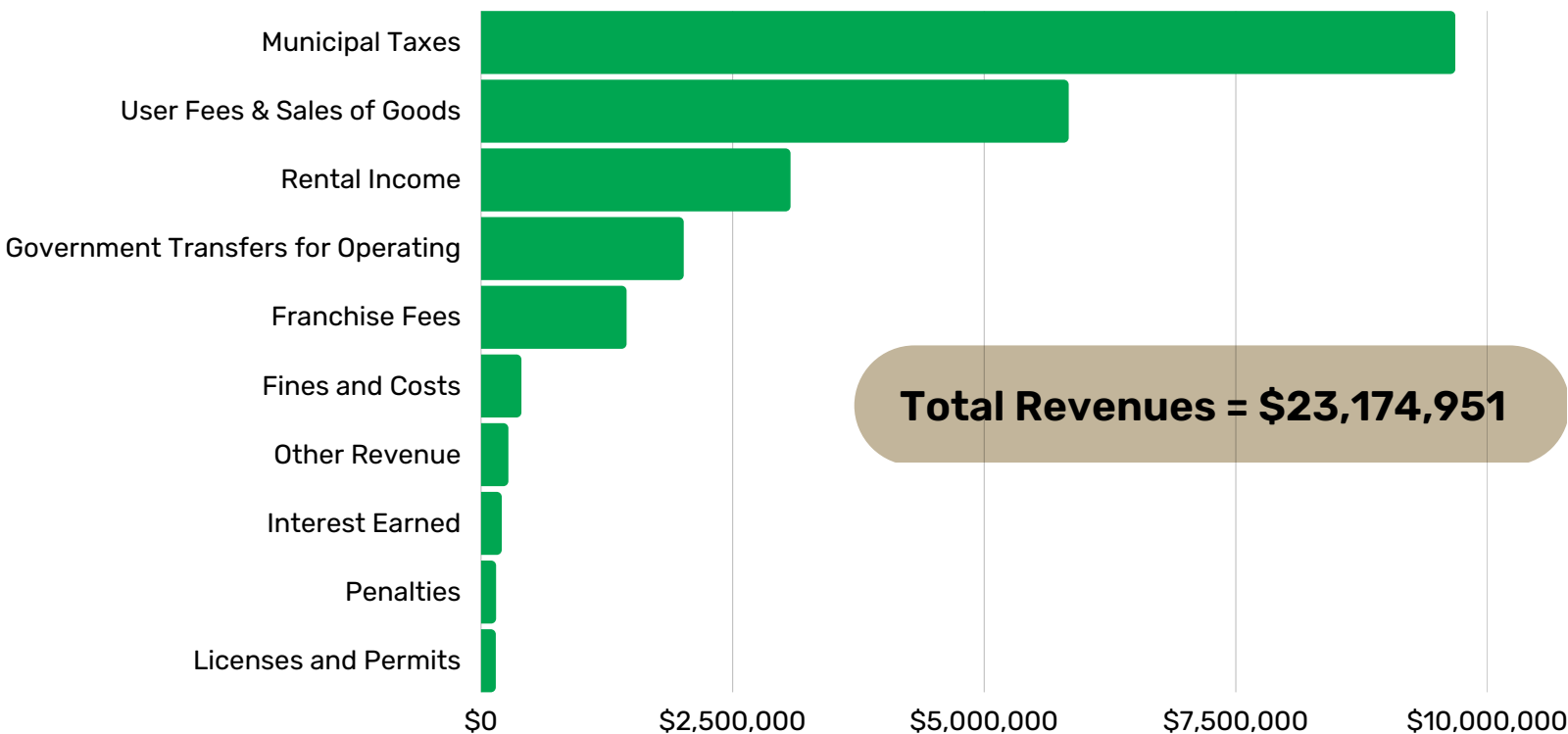
The Operating Budget reflects the cost of maintaining Slave Lake's core services, programs, infrastructure. It also includes new initiatives and improvements to programs that will advance Council's strategic vision.



Significant infrastructure investment includes investments into our roads and sidewalks and continuing investments into our water systems. Quality of life improvements include enhancements to Hilda Eben Park and investments in the MRC facility.

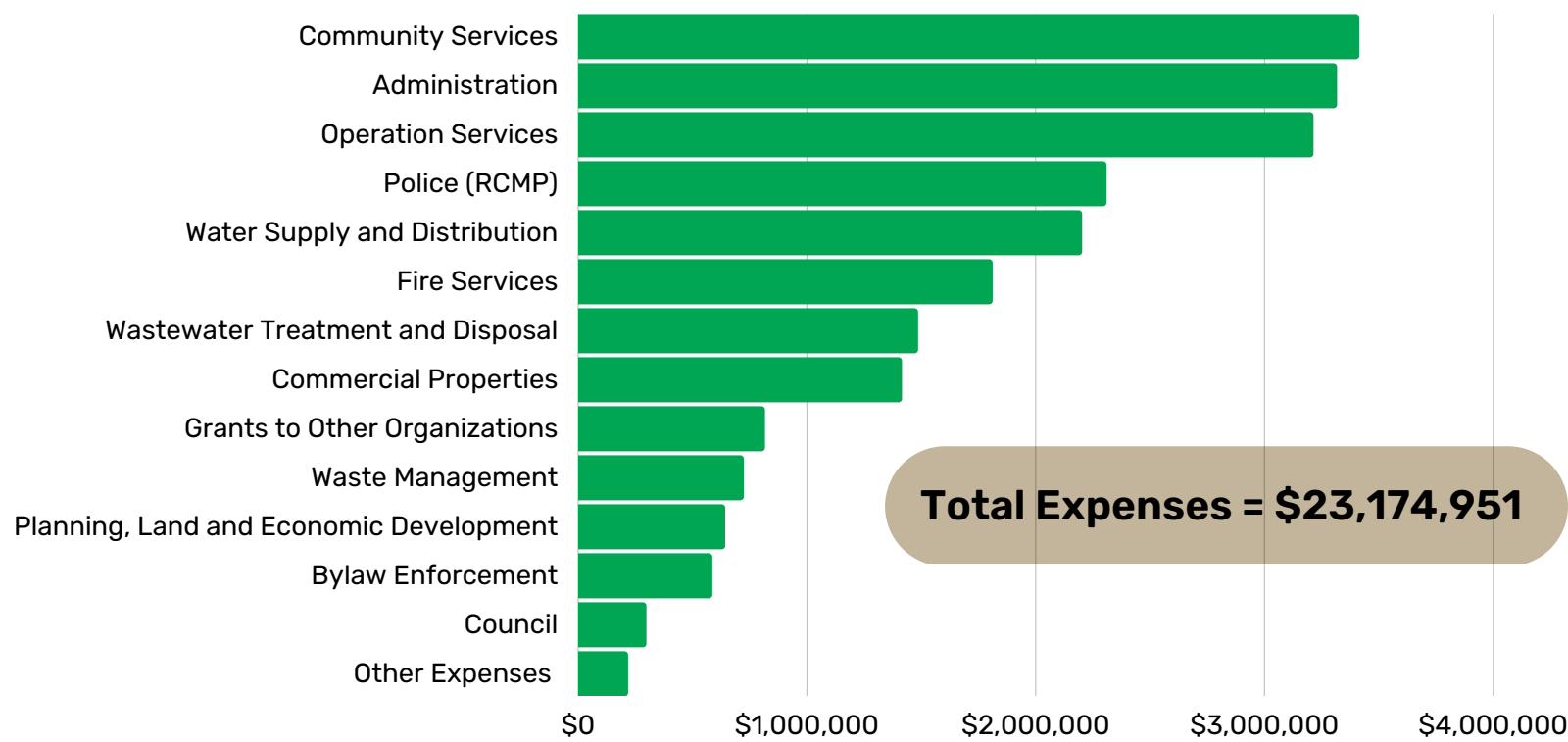


## WHERE DOES THE MONEY COME FROM - OPERATING

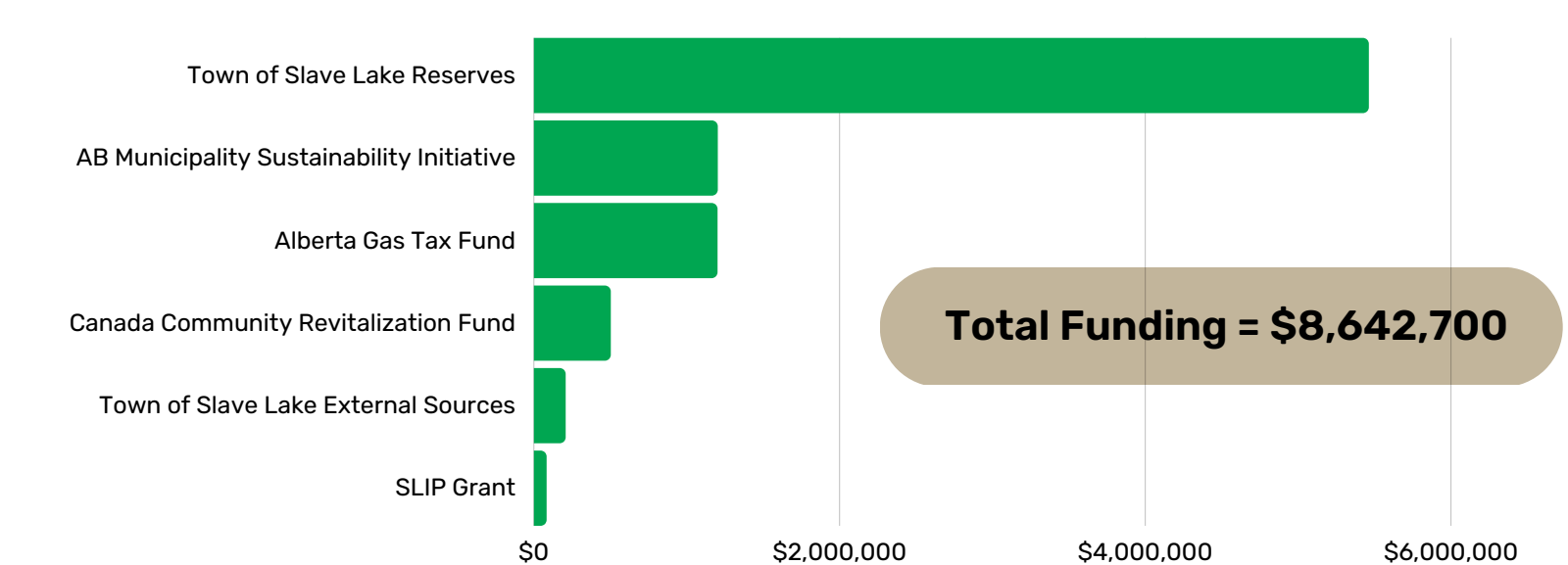




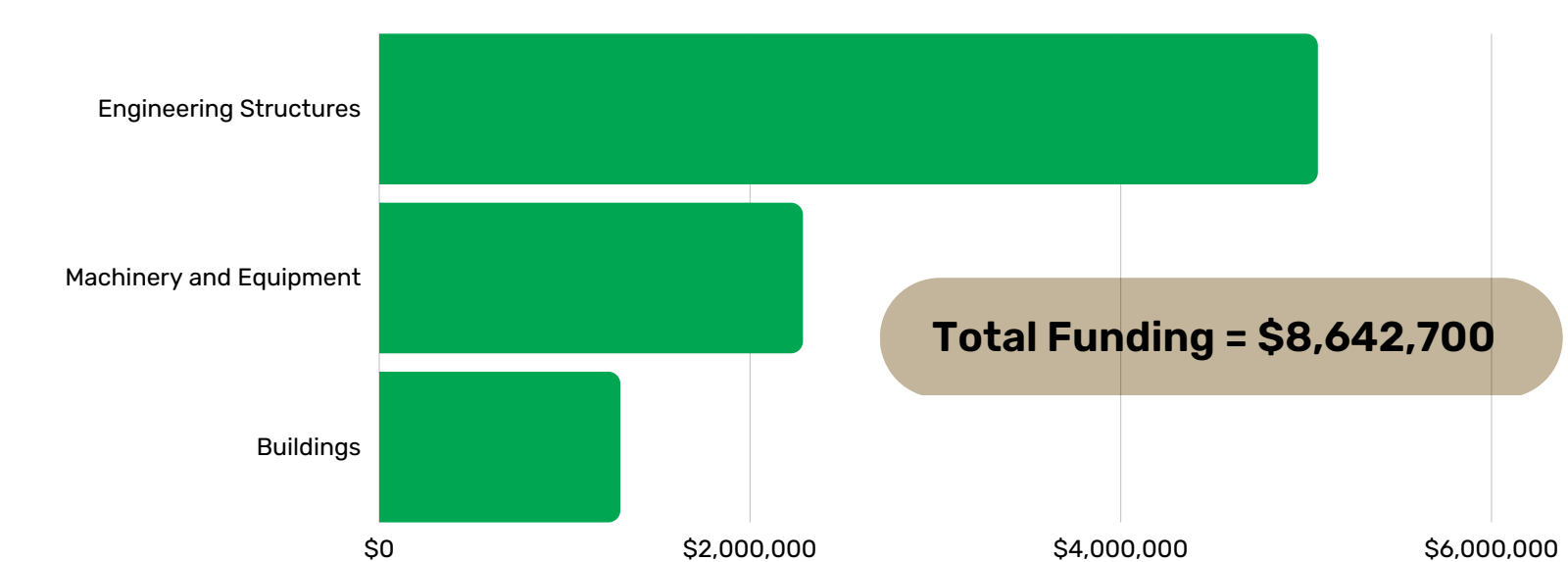
## WHERE DOES THE MONEY GO - OPERATING



## WHERE DOES THE MONEY COME FROM - CAPITAL



## WHERE DOES THE MONEY GO - CAPITAL



## WHAT DOES THIS MEAN FOR SERVICES?

Increased Access to Online Services

Police and Fire

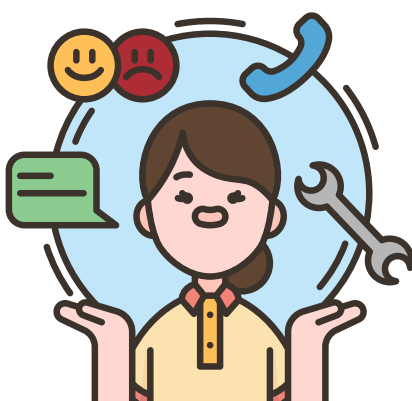
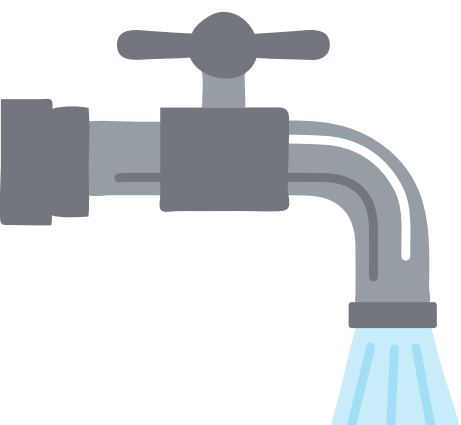
Water and Waste Water Services

Current services levels will be **maintained** and improved in some areas. Town of Slave Lake households receive a wide variety of services for their municipal property taxes. These taxes deliver services such as police, fire protection, roads, parks, sports fields, recreation facilities, and much more.

Roads and Sidewalks

Parks and Playgrounds

Multi-Rec Centre Upgrades





# BUDGET 2023

Does this Mean  
there will be an  
Increase to  
Property Taxes  
this Year?

**YES**

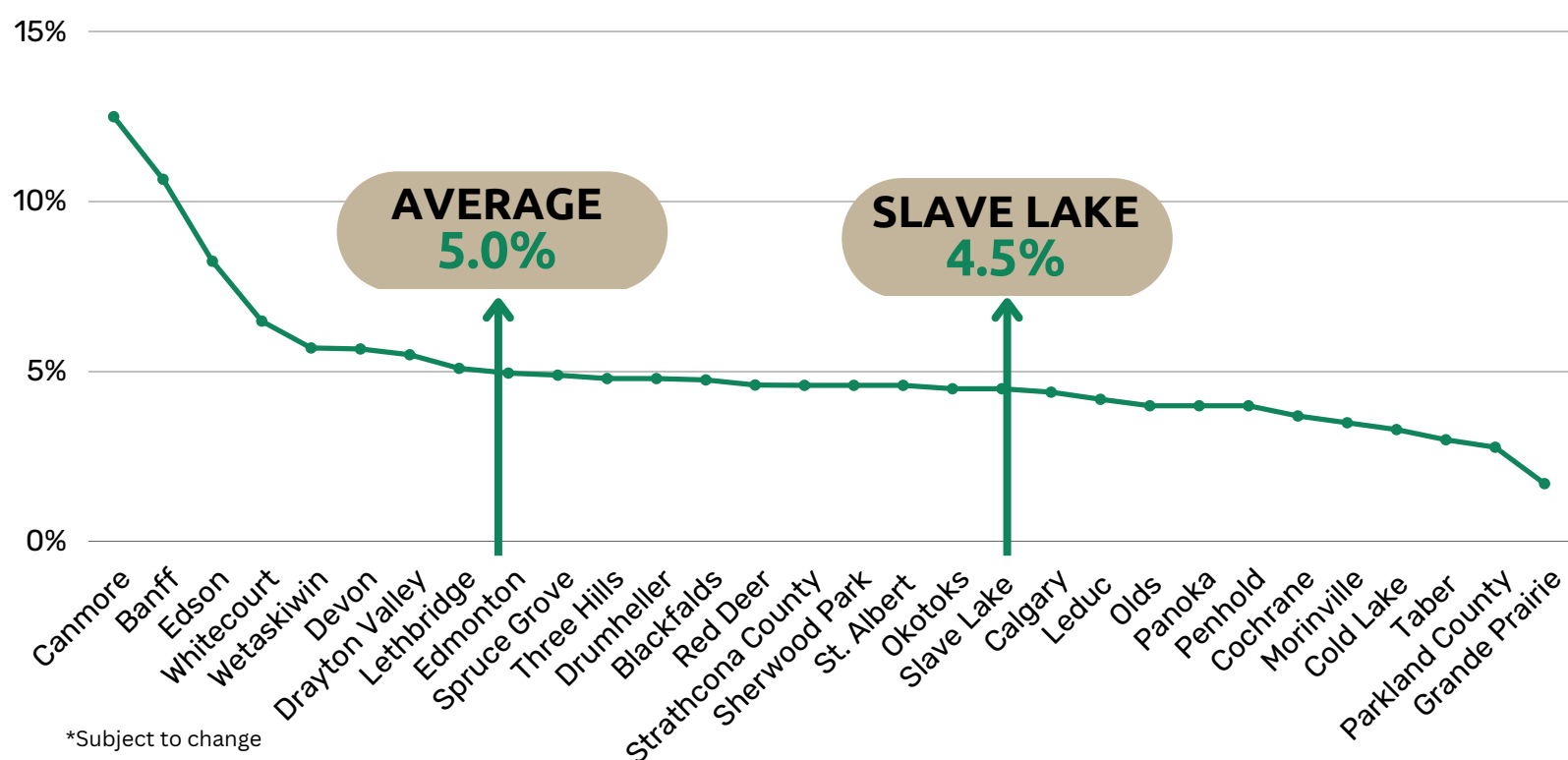
**4.5%**

## HOW MUCH WILL THIS INCREASE COST ME?

The chart below shows the estimated monthly and annual increases for the 2023 year to the average household in Slave Lake based on assessment value.

Assessment Value	Total Town Taxes	Monthly Increase	Annual Increase
\$200,000	\$1,958	\$7	\$85
\$306,000	\$3,036	\$11	\$131
\$550,000	\$5,386	\$19	\$233

## HOW DOES SLAVE LAKE COMPARE WITH THE REST OF THE PROVINCE?



### FEEDBACK



### Want to Provide Feedback?

Form Center • Slave  
Lake, AB • CivicEngage

### Emergency After Hours

Water and Sewer  
780-805-5225  
Roads and Sidewalks  
780-849-1631

**FEEDBACK**

**CONTACT US**

### Office Phone

780-849-8000