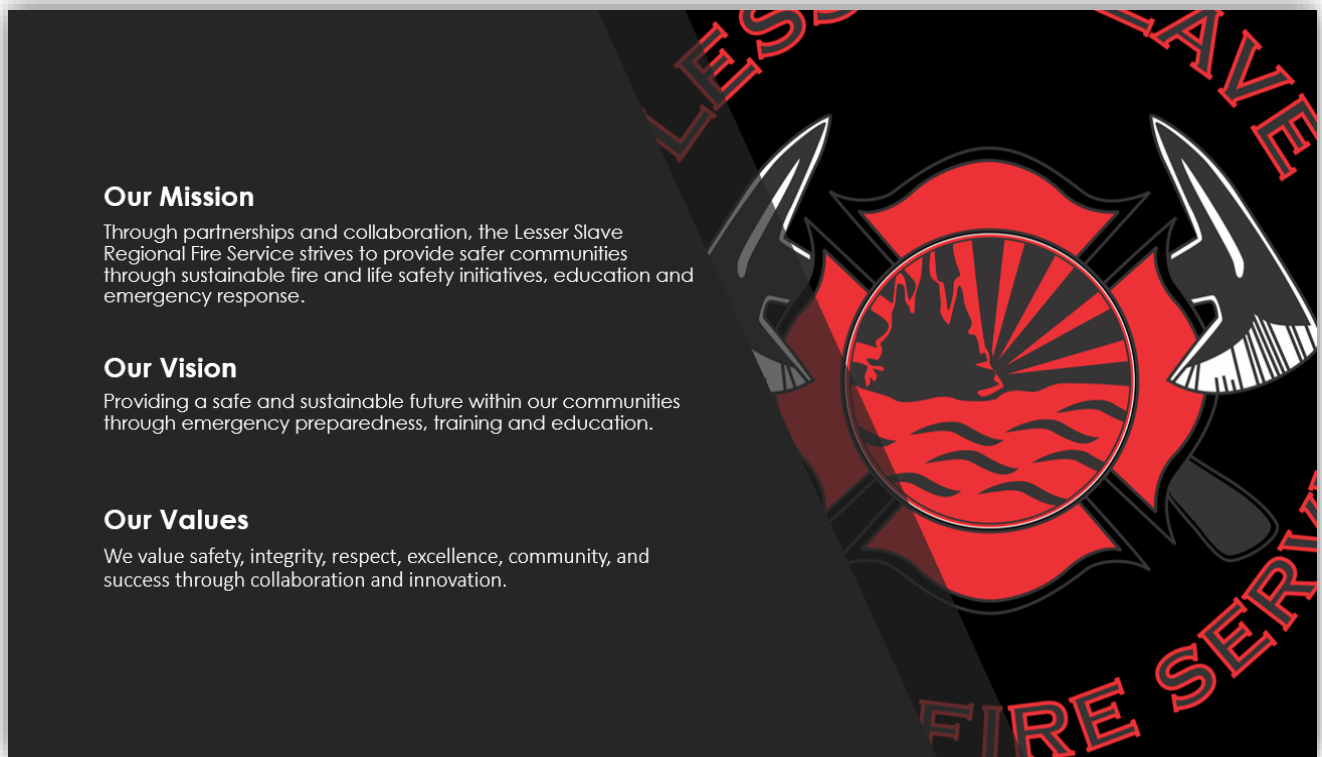




2023 Annual Report



Our Mission

Through partnerships and collaboration, the Lesser Slave Regional Fire Service strives to provide safer communities through sustainable fire and life safety initiatives, education and emergency response.

Our Vision

Providing a safe and sustainable future within our communities through emergency preparedness, training and education.

Our Values

We value safety, integrity, respect, excellence, community, and success through collaboration and innovation.

SUMMARY

2023 the Lesser Slave Regional Fire Services again responded to a record number of emergency call outs, totaling 692, A large increase in Wildland fires this year as Alberta experienced one of the worst wildfire seasons in recent history. All stations responded to a wildfire event along the Old Smith Highway in late May for 7 days, as well the LSRFS sent units and members to 13 communities in Alberta and the North West Territories to assist. Responding to various events also means that we require highly trained, professional responders. Training has become a large focus as we entered into the first ever Paramedic/Fire live in training program with Northern Lakes College and Lakeland College.

A new custom rescue truck was delivered in late December, and the Lesser Slave Fire and Rescue Society, along with Tim Hortons Smile Cookie, collaborated to upgrade our Command/Rehab trailer to a mobile bus unit, with no cost to the fire service. The trailer was turned over to Search and Rescue as an upgrade, and the old Search and Rescue trailer will become a Hazmat response unit.

This report will briefly illustrate some of the statistics for the 2023 response year and highlight some of the challenges faced as well look ahead to the challenges that lie ahead in 2024. A new formal Fire Services agreement between the Town of Slave Lake and Sawridge First Nation was finalized in 2023 and the Alberta First Responders Radio Communications System (AFRRCS) full changeover from the existing Legacy system is expected to be completed in 2024. As well as a replacement fire engine for one of the Rural Fire stations will be ordered.

Emergency Calls

Breakdown by Station:

Station 1 (Slave Lake) – **578**

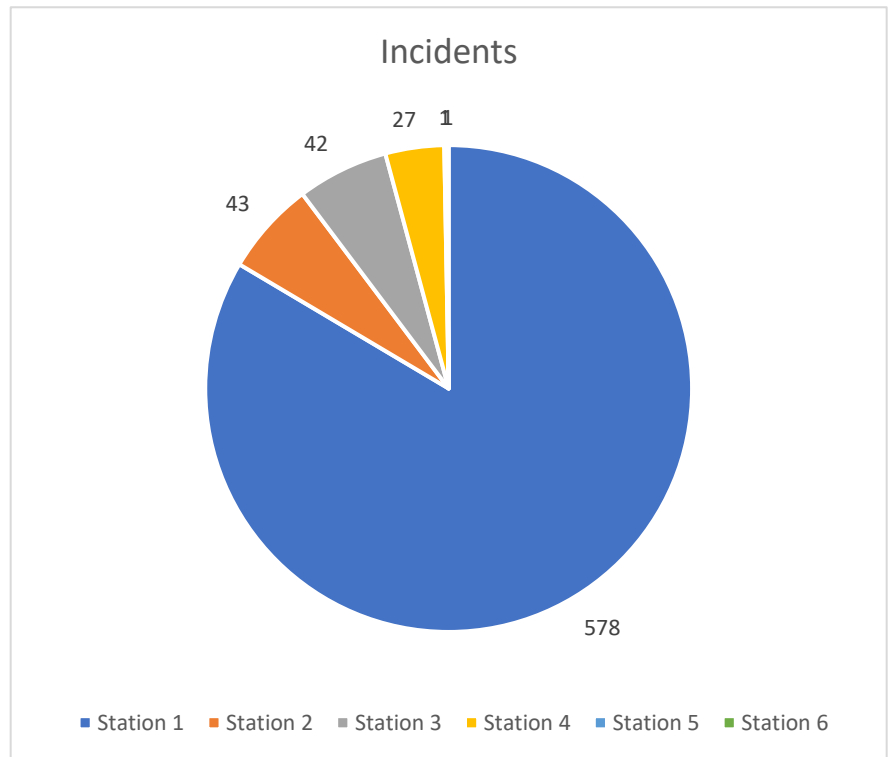
Station 2 (Widewater) – **43**

Station 3 (Smith) – **42**

Station 4 (Flatbush) – **27**

Station 5 (Mitsue) – **1**

Station 6 (SAR) – **1**



Incident Statistics:

Fire – 327

Structure, car, outdoor, alarms, power, trash

Rescue – 179

Motor vehicle collision, rope, confined space, water, ice, machinery, SAR assist, backcountry

Medical – 168

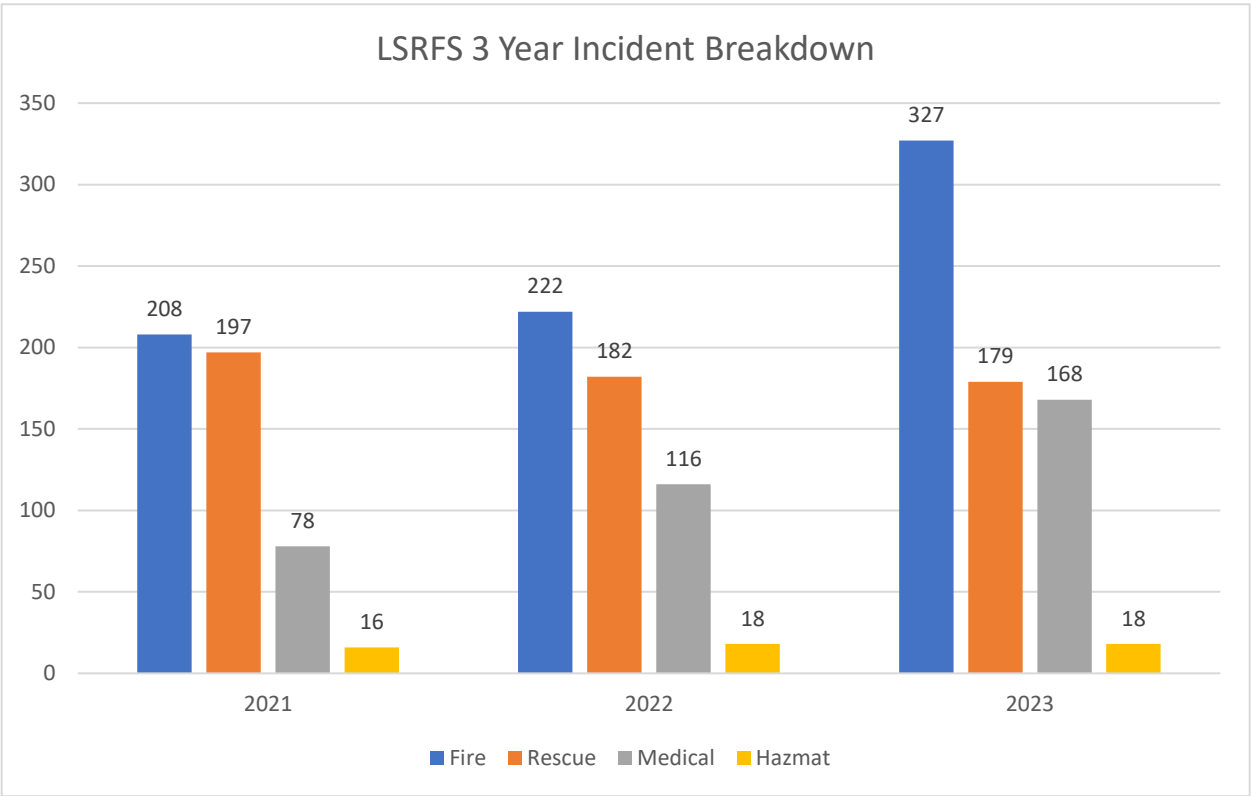
All EMS assistance incidents

Hazmat – 18

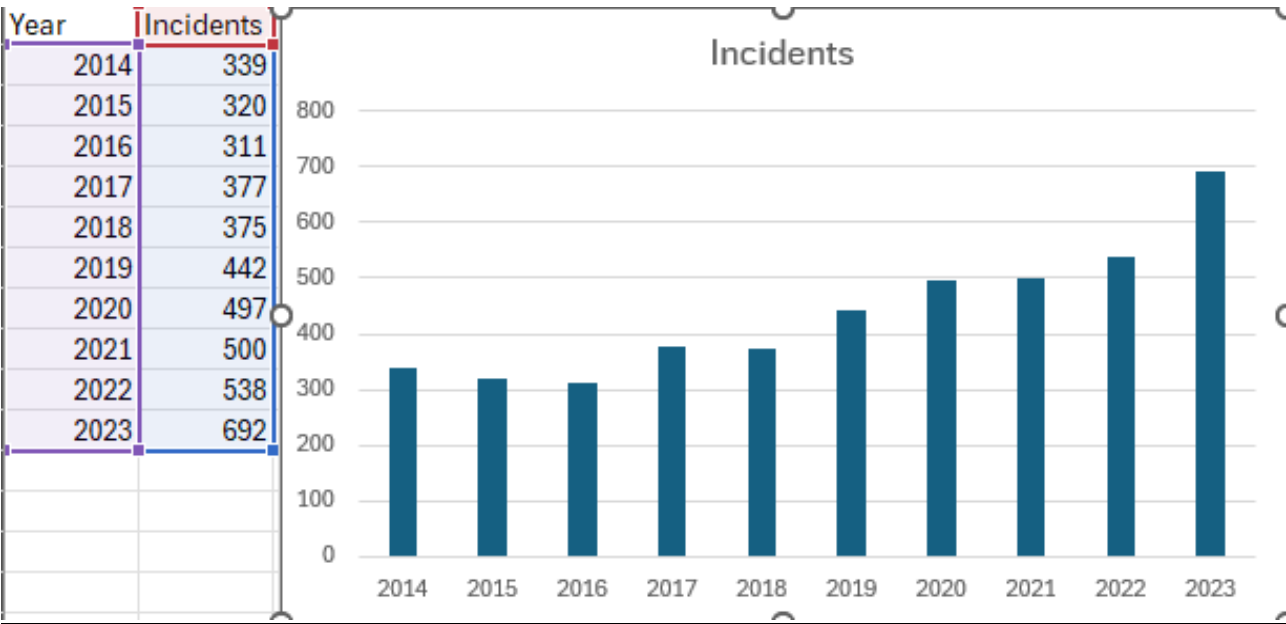
All Hazardous Materials related incidents

Total Incident 2023 = 692

Total personnel incident hours – 4,714



Ten Year Trend



FIRE & LIFE SAFETY / PREVENTION

- Fire & Life Safety Inspections: **36**
- Fire Investigations: **14**
- Fire Prevention week school tours – **13 schools/2816 School Age Children**
- Fire Department open houses (fire prevention week and Emergency Preparedness week) – **5**
1300 Guests Visited Open houses
- Community Events (*i.e., Candy cane check stop, Christmas toy drive*) – **2**
- FireSmart Community Events: **1**
- Marten Beach Community Day
- FireSmart Home Assessments: **1** completed
- Hazard Reduction Burning: **65** HA
- Grass Mowing **200** HA
- Boat Patrols: **21**
- Pre-Incident Planning: **55** Complete, **21** in progress
- Community Wildfire Pre-Planning: **5** Complete, **5** in progress

EMERGENCY SERVICES TRAINING CENTRE

- 2023 Recruit Class's – 18 new LSRFS members (*13 Slave Lake, 1 Widewater, 3 Smith, 1 Flatbush*)
- In-House Training Program (*5 LSRFS Stations*)
- All in house training for LSRFS firefighters (*Monday/Tuesday nights, weekend training*)
Total Training Hours all LSRFS members – **3568 Hours**
- Basic & Advanced Wildland Urban Interface (WUI) Course Development. The LSRFS developed these courses with the NLC.
- ATCO Electric driver training
Employee driver training course for 3 days
- Northern Lakes College
NLC confined space rescue course (*4 days throughout year*)
- WCSS annual spill exercise
2-day spill clean up exercise.
Area D spill co-op annual training scenario's 2-day hazardous spill exercise
- Special teams training. Water rescue & technical rescue third Wednesday night of each month
- Search & Rescue training.
Training twice per month on first and third Wednesday night of each month
- New LSRFS/Northern Lakes College/Lakeland College Program 4 months

LOCAL FIRE SERVICE GROUPS

- Special Teams – *Lead Organization*
- Search & Rescue – *Lead Organization*
- Mitsue Mill Managers – *Committee Chair*
- Protective Services – *Committee Chair*
- Regional Fire Chiefs – *Committee Chair*
- Area D Spill Co-Op - *Member*
- Regional Advisory Group – *Internal working Committee*

FIREFIGHTER SOCIETY

- Fishing Tournament
- Smile Cookie
- Golf Tournament
- All In Weekend Support

LSRFS FLEET

- **1 Squad**
 - Carries tools to start any job (*i.e.: small rescue tools, firefighting gear, water/rope gear, Hazmat*).
- **1 Rescue Truck**
 - Has all the rescue gear needed to perform any rescue and all Hazmat gear.
- **2 Ladder Trucks**
 - 1 in Slave Lake first out to all confirmed structure fires, 1 in Mitsue industrial park.
- **6 Engines**
 - 2 Engines in Slave Lake, 1 for structure fire response, 1 for wildland response or where 4x4's needed, 1 at every other station, rural engines carry rescue tools as well as fire equipment.
- **1 Brush Truck**
 - Set up for wildland fires and structure protection locally and/or provincially.
- **4 Tanker Trucks**
 - 1 in Slave Lake, 1 in Widewater, 1 in Smith, 1 in Flatbush used for areas with no hydrants.
- **5 Command/Light Vehicles**
 - Used for Nighttime duty officers, Chief vehicles, pulling trailers and 1 can help to plow snow.
- **1 unit station in Flatbush**
- **6 Trailers**
- **1 Command/Rehab Unit**
- **1 SAR trailer**
- **2 structure protection units (+ 1 new one in 2024)**
- **2 electronic signs**

LSRFS FLEET Con't

- **4 ATV's** 2 6x6's and 2 Quads used by all stations, Search & Rescue and Special Teams for access.
- **2 Boats**
 - 1 Large 24-foot aluminium hull for lake use, 1 Small 11-foot rib boat for river, creek, and flooding use.
- **1 Tractor**
 - Used for mowing program to keep down hazardous grass in spring, summer and fall.
- **1 Skid Steer**
 - Training centre support, snow removal station 1,2,5 and removal of problem trees.



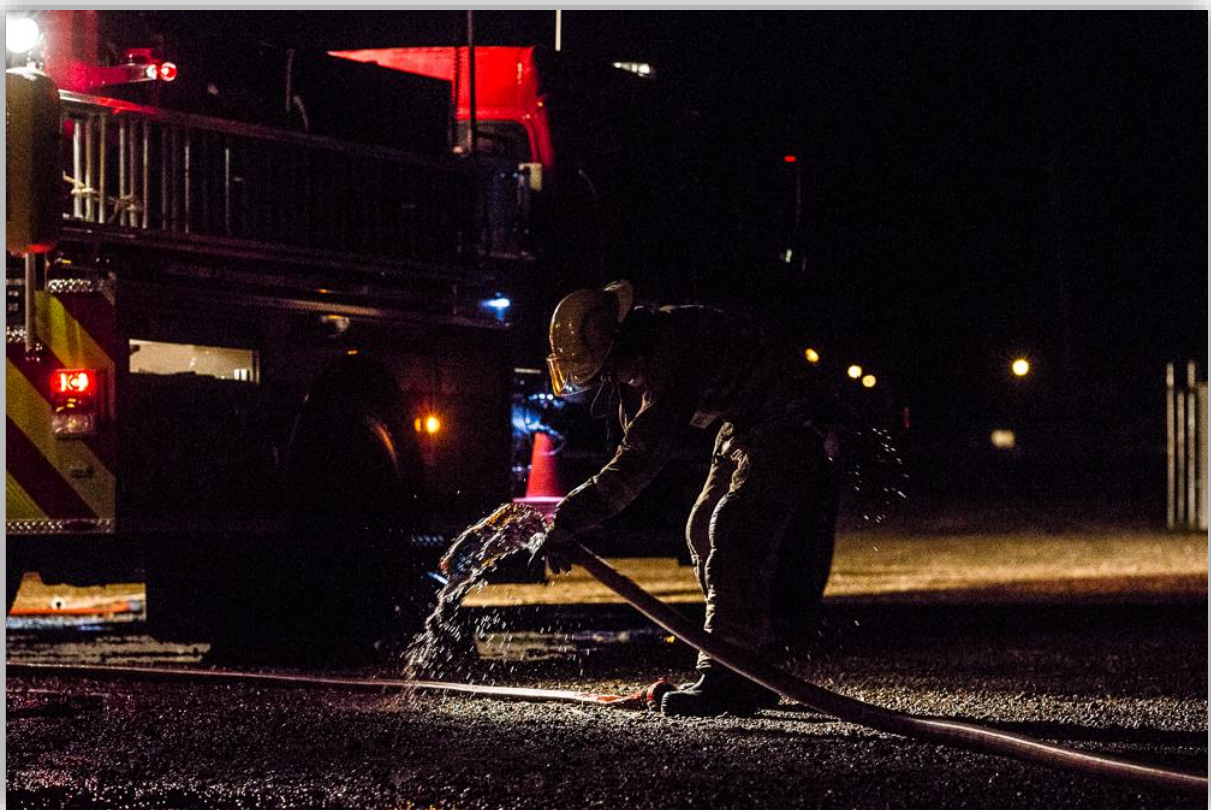
LSRFS RESPONSE AREA

- 10,000 Square KM
- 10,000 Residents
- 400 KM of primary & secondary highway
 - 110km North on Hwy 88, 60km East on Hwy 754, 118km South on Hwy 2/44, 60km East on Hwy 2 towards Athabasca, 40km West on Highway 2.
- **Bodies of water**
 - Athabasca river, Lesser Slave river, Pembina river, East basin of Slave Lake, all streams, creeks, dugouts, and ponds in MD124.
- **Provincial Parks**
 - Lesser Slave, Fawcett, Lawrence Lake, Chain Lakes.
- **Mitsue Industrial Park**
 - Tolko, Slave Lake Pulp, Alberta Plywood and Vanderwell's, Tiger Calcium
- **All oilfield facilities**
 - Marten Hills road, Hwy 754, Hwy 88, South Mitsue, Mitsue.



COMMUNITIES

- Assineau Initial Response: Station 2
- Canyon Creek Initial Response: Station 2
- Widewater Initial Response: Station 2
- Wagner Initial Response: Station 2
- Bayer Road Initial Response: Station 1
- Slave Lake Initial Response: Station 1
- Sawridge First Nations Initial Response: Station 1
- Marten Beach Initial Response: Station 1
- Poplar lane Initial Response: Station 1
- Mitsue Industrial Park Initial Response: Station 5
- Old Smith Highway Initial Response: Station 1, 5 or 3 (*depending on location*)
- Hondo Initial Response: Station 3
- Smith Initial Response: Station 3
- East Fawcett Initial Response: Station 3
- West Fawcett Initial Response: Station 3
- Lawrence Lake Initial Response: Station 3
- Chisholm Initial Response: Station 4
- Tieland Road Initial Response: Station 4
- Flatbush Initial Response: Station 4



5 STATIONS

- Station 1 Slave Lake, Station 2 Widewater, Station 3 Smith, Station 4 Flatbush, Station 5 Mitsue.
- **3 Special Teams (*Water, Technical Rescue, Hazmat*)**
 - Ran out of Station 1 and practice once a month.
- **1 Search & Rescue Group**
 - Ran out of Station 5 and practice twice a month.
- **99 Paid-On-Call Members**
 - Split up between Station's 1 – 5, SAR and Special Teams.
- **8 Fulltime Permanent Staff**
 - Fire Chief, Deputy Chief, Maintenance Officer, Admin Assistant, Captain, 3 Fire Fighters.
- **6 Students** Lakeland/NLC
- **Station 1:**
 - 29 Firefighters
 - 2 Lieutenants
 - 4 Captains
 - 1 Deputy Chief
 - 1 Fire Chief
 - 22 SAR Members
- **Station 2:**
 - 6 Firefighters
 - 1 Captain
 - 1 Lieutenant
- **Station 3:**
 - 12 Firefighters
 - 1 Captain
 - 1 Lieutenant
- **Station 4:**
 - 11 Firefighters
 - 1 Captain
 - 2 Lieutenants
- **Station 5:**

Note * currently stationed out of Station 1, Station 5 ran as a satellite station.

PROFESSIONAL ASSOCIATION ACTIVITY / INVOLVEMENT

- Canadian Volunteer Fire Service Association (*CVFSA*)
- Alberta Fire Training Officers' Association (*AFTOA*)
- Canadian Association of Fire Chiefs (*CAFC*)
- National Fire Protection Agency (*NFPA*)
- Alberta Fire Chiefs Association (*AFCA*)
- Search and Rescue Alberta (*SARA*)
- Peace Regional Fire Chiefs' (*PRFC*)
- Alberta Task Force 1 (*ABTF-1*)

