

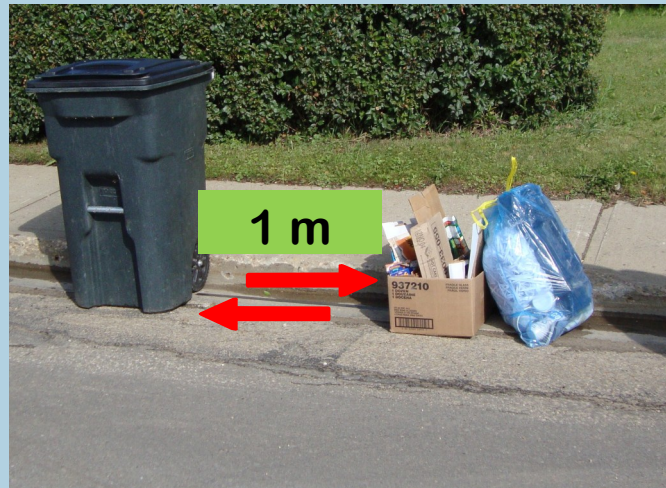
What Does Not Go In The Blue Bag ?

Garbage, Compost, and other things

- Food scraps, peelings, meat; aluminum/tin foil, clothes hangers, aerosol cans, loose can lids; disposable diapers, tissue paper or paper towels; Pet Food bags, disposable coffee or drink cups
- Glass, ceramics, porcelain, pottery, mirrors, dishes, cups; frozen juice cans and powdered drink containers
- Styrofoam, chip bags, cellophane candy wrappers, dirty plastic, toys, wading pools, toothpaste tubes
- Garden hoses; grass, leaves, brush, garden waste; shoes, clothing, sawdust, pet feces/kitty litter, ashes, floor sweepings, vacuum cleaner bags
- Hazardous waste, paint, oil, flammable products, batteries, household cleaners; wood, rubber, lightbulbs, syringes, appliances (anything with a battery or cord)

We Can Do Better...

If you are not sure of what can be recycled, or have questions or comments please contact the Town of Slave Lake at the numbers shown.



Other Information

- Place the Blue Bag and cardboard about one metre from your garbage cart at the curbside.
- The Blue Bag and cardboard will be collected on the same day as the household garbage pick up for your area.
- All large recyclable objects that cannot be placed in the Blue Bag can be placed in the appropriate bins at the Town of Slave Lake Recycle Depot located at 1001—7th Street N.E., or The Lesser Slave Lake Regional Landfill located south of Wideswater, in the MD of Lesser Slave River No.124.
- Blue Bags are not supplied by the town and may be purchased at the usual retail businesses.

THINK BLUE

Your Blue Bag Recycling Guide

Commencing
September 1st, 2012



TOWN OF SLAVE LAKE

PO Box 1030
Slave Lake, Alberta
Phone : 780 849 8000
Fax : 780 849 2633
www.slavelake.ca

What Goes In The Blue Bag ?

Clean Plastic Containers & Bags

- Beverage containers including pop & juice
- Plastic bottles including food, detergent & shampoo bottles
- Rigid plastic including take-out sandwich containers
- Plastic tubs - ice cream, yogurt and margarine tubs (rinse clean with hot water)
- Plastic bags—grocery, retail, bubble wrap. (remember to empty all bags. Stuff all into one bag and tie closed)

Clean Milk or Juice Cartons

- Includes tetra-paks and mini-sips. (empty, wash, rinse, dry & do not flatten)

Clean Metal Cans

- Food tins, no lids (no need to remove labels)

No Garbage in Your Blue Bag!

If in Doubt— Find Out!



Shredded Paper



Plastic Bags



What Goes In The Blue Bag ?

Paper, Newsprint, and Magazines

- Newspaper, flyers, and magazines
- Writing, computer, and photocopy paper (not shredded)
- Shredded office paper stuffed, and tied closed in a separate bag
- Phone books, paperback books
- Egg cartons (no styrofoam cartons)
- Paper bags

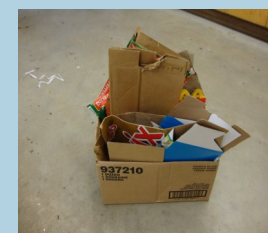
Cardboard

- Clean flattened cardboard boxes, with plastics and styrofoam removed
- Cereal, toothpaste, and similar cardboard packaging boxes

DO NOT place the cardboard in the blue bag.

Place the flattened cardboard in a larger cardboard box, or bundle it together with tape or string. Place the bundle of cardboard alongside or under the blue bag.

Cardboard



OR

